

PUCKLECHURCH NEWS



Christmas 2011

www.pucklechurch.org

Funded by the Parish Council

Council Says Farewell to Years of Experience

I was delighted to be able to recognise long service and give the Parish's thanks to three Parish Councillors who decided to stand down after a lifetime of service to the community. As you know Les Whittock, Marilyn Palmer and Omar Beg did not stand for election this year, and the Parish lost a wealth of knowledge and experience as a result.

Les served on the Council for over 30 years and has been instrumental in moulding what Pucklechurch Parish Council is today. His tireless work and commitment in his younger days is an example to us all. He was Mr Pucklechurch! His activities were far too many to capture here, but suffice it to say that Pucklechurch is a better place because of him.

Marilyn, though somewhat younger than Les, still managed 28 years on the Council. She has also been involved across many areas of the village, including a vast amount of youth work when she was but a girl herself. Her knowledge, having worked at all levels of government, was extremely beneficial to the Council, and her understanding of the dark science that is planning gave us a clear steer on what could and could not be done.

Omar, the younger in terms of service on the Council with a mere 24 years of service, spent the last 13 years as Chairman. His leadership of the Council, through some difficult times, has been a great example of role model behaviour, which I hope to emulate. He also is heavily involved in other areas of the community – the church and Twinning spring to mind – and you should check out the YouTube video of Omar leading Twinning in song in France.



New Chairman Bob Symons (left) presented outgoing Chairman Omar Beg (centre) and councillor Les Whittock (right) with awards for their long service (Marilyn Palmer was unable to attend the presentation.)

A small presentation of commemorative plaques took place on behalf of the current Council to these long-serving Councillors.

Bob Symons, Parish Council Chair

Post Script:

Alan Holder decided that it was time to resign from the Council, having looked at the number of hats he was wearing for the community. Alan – like Marilyn, Omar and Les – worked tirelessly for the community on the Parish Council and in other groups, and his experience and hard work will be missed. I would like to express the Council's thanks for his efforts on the Parish Council's behalf.

Pucklechurch Players

Present Funny Money

By
Ray Cooney

Friday, 18th November,
evening performance

And

Saturday, 19th November,
matinee and evening performances

Pucklechurch Community Centre

For tickets or further information, call
Elaine on 937 3105 or Clare on 937 2137

Come to the Heartbeat Ball

in aid of Pucklechurch HeartStart
Come dance to popular covers from
the '60s to the present
by the Rifftoads

Friday, 11th November, 7.30pm
Pucklechurch Community Centre

Tickets £5

Available from Angela Hallett
angelahallett@gmail.com or 937 4252

Remembrance Sunday

Sun, 13th Nov 10am Holy Communion
 10.45am Service of Remembrance
 Parade service with uniformed organisations; wreaths laid; two minutes' silence kept.
 Collection for Help for Heroes and the British Legion.

Sun, 27th Nov 6.30pm Advent Carol Service

Sun, 18th Dec 6.30pm Carols by Candlelight

Christmas Eve

Sat, 24th Dec 4pm Christingle and Nativity Service
 11.15pm Carols
 11.30pm Midnight Communion

Christmas Day

Sun, 25th Dec 10am Family Communion

St. James the Great, Abson

Sun, 18th Dec 3pm Carol service

Sun, 25th Dec 8.30am Holy Communion

Autumn Fair

Sat, 10th Dec 2pm Pucklechurch Community Centre
 Stalls, crafts, new goods, bric-a-brac, toys, books, cakes, preserves, tombola, raffle, and refreshments.

Christmas Concert at St Thomas à Becket

Tues, 6th Dec 7.30pm St George Singers. Refreshments, wine and soft drinks. Raffle available. Tickets £6.00 with proceeds going to the Julian Trust/Caring at Christmas.

Shortwood Methodist Chapel

The annual Sale of Work is on Saturday, November 12th, starting at 2.30 pm. There will be all sorts of good buys to be had, including delicious homemade cakes.

Services are held at Shortwood Methodist Chapel every Sunday, normally at 2.45 pm.

Our Christmas Carol Service will be held on Sunday, 18th December, at the later time of 6.00 pm. Come and enjoy some traditional Christmas carols, candlelight, hot drinks and mince pies.

You are very welcome to join us for any or all of these events.

Caroline Slinn

Your Donations Really Add Up

In the period from May to July, 2011, the St. Peter's Hospice collected 132 bags of clothes from the clothes bank in the car park of the Pucklechurch Community Centre. Based on an average value of £30 per bag, this is worth around £3,960.

To put this into context, it will pay for eight children to be supported through FLAGS (Family Liaison and Grief Support). Our support really makes a difference to local patients and their families. Please pass on our sincere thanks to everyone who has supported us.

Sian Rees, St Peter's Hospice

In October, Shortwood Village WI celebrated its fourth birthday. We are a small, friendly group who meet on the second Thursday of every month in the vestry at the rear of Shortwood chapel. In December, our meeting takes the form of a Christmas party at the Bridge Inn in Shortwood, which is invariably a hilarious event with traditional games such as Pass the Parcel (with forfeits, of course!).

Although we are relatively new and small, we have been fortunate in finding some excellent speakers for our meetings. We have also organised coach trips. Last year we went to Tyntesfield House, and in September this year we had a pleasant sunny day at Kew Gardens.

New members are very welcome. For more details, ring our president Catherine Stapleton on 937 3312.

**Volunteers Needed
 at YOI
 Ashfield**



Here's an offer you don't see every day – the chance to monitor the standards in your local prison. We are currently looking for new volunteers to join the Independent Monitoring Board (IMB) at YOI Ashfield in Pucklechurch, which is required to ensure that proper standards of care and decency are maintained.

You do not need any special qualifications or experience, as we will provide any necessary training. We welcome applications from people over 18 and are particularly keen to hear from young people and individuals from black and minority ethnic communities, since these groups are under-represented on the existing board.

New board members will join the ten existing members, spending around four half-days per month monitoring the prison, talking to young people and staff, and attending the monthly board meeting. Expenses will be covered.

For further details, please write to The Recruitment Officer, Independent Monitoring Board, HMP/YOI Ashfield, Shortwood Road, Pucklechurch, Bristol BS16 9QJ.

Pucklechurch News

Funded by the Pucklechurch Parish Council

Produced by

Jacki Berry, editing and proofreading
 937 4437, editor@pucklechurch.org
 Hodden Cottage, Hodden Lane

Jackie Sexton, layout and printing
 937 3176, jacqy.sexton@btinternet.com
 44 Birch Drive

Valerie Broom, collection and distribution
 937 2025, v.broom16@btinternet.com
 16 Partridge Road

Please email articles to editor@pucklechurch.org or drop them off to any one of us at the addresses above. Please include your name and telephone number in case we have questions about your article. We reserve the right to edit all articles. We cannot be responsible for the accuracy of articles submitted for publication.

Copy Deadlines:

- 10th January for Winter issue (February)**
- 10th March for Spring issue (April)**
- 10th May for Summer issue (June)**
- 10th August for Autumn issue (September)**
- 10th October for Christmas issue (November)**

For the latest news, visit the online version at
www.pucklechurch.org

Parish Council Report

There has been lots going on since the last report, and the Council have been very busy. The good news is that we are now at full strength. Lori-Anne Scantlebury, Edmund Aze, and Wayne Prewett have been co-opted onto the Council. We welcome them and look forward to working together to serve the parish effectively.

In the last report, it was noted that we hoped to have a satisfactory solution for the residents opposed to the St Aldam's play area. Unfortunately, we have not reached this point but are working with the community to agree a way forward to bring the matter to a satisfactory conclusion for all. At the time of writing, the Parish Council have not yet taken over responsibility for the area, as there are a few, mainly cosmetic, actions that need completing by South Gloucestershire Council.

The Community Plan is now at its next stage and a Steering Group has been formed of Parish Councillors and parishioners. This Steering Group is very important; its role is to give advice and recommendations to the Parish Council on priorities and approaches for the implementation of the plan, to identify emerging needs, involving the community, and to recommend further actions. Our thanks go to all those previously involved in giving up their time to produce this superb document. If there are any parishioners who would be interested to play any part in this, please contact Tina Symons on 937 4105.

The Part Night Lighting activity is now underway, and we are having a positive impact on the environment. There are some concerns over the brightness of the new lights, which we hope will be addressed in time by South Gloucestershire Council.

The Oaktree Avenue development has been put on hold awaiting the result of the village green application. The inspector's report on the village green application will not be available until after this newsletter has been printed, so I have no further news. The proposed doctor's surgery is not affected by the village green application and so we see no reason for the application to hold up plans for the surgery.

We have had a number of applications for the village orderly role, and we hope that you will be seeing the benefits by the time you read this.

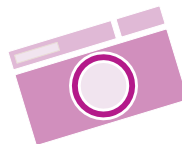
We'd like to inform you of Council protocol on decision-making. Our nine councillors have an open discussion around every decision the Council is asked to make. When discussions are over, a formal proposal is made, which is then seconded, or amended and seconded, and then the nine members vote. The decision, if not unanimous, is decided by simple majority and adopted by the entire Council. No Council decision can be attributable to any individual councillor or councillors, as it is the whole Council's decision. I hope this clarifies some recent misunderstandings.

Finally, the Council sends you our season's greetings, wishing you all a Merry Christmas and a Happy New Year.

Bob Symons, Chair

PA Vacancy

The interesting but not arduous job of secretary to the Pucklechurch Community Association is open. The minimum, after attending the once-a-month meeting on a Tuesday evening, is to write the brief minutes and email them out and write an occasional letter. After that, the level of involvement is your choice. If you are interested, please phone Alan Holder on 937 2818.



Revel Photography Exhibition

The Revel Photography Exhibition was held on Sunday, 9th October, in the Community Centre. People who came were able to see the entries in the 7th annual Bob Stone Memorial Photography Competition, find out who the winners were, and view a larger exhibit of photographs put together by Mike Hanks and friends.

The winning entries in the Bob Stone Memorial Photography Competition were:

Open Category – 18 and over

1st: Mike Wallace, "Too Much to Resist"
2nd: Maurice Peters, "Going for Glory"
3rd: James Gardner, "Antonio"
Highly Commended: Mike Reynolds, untitled
Commended: Maurice Peters, "Great Knees"
Commended: Suzanne Wembridge, "Red Flag Emergency Services"

Village Life Category – 18 and over

1st: Richard Ford, "Serving at the Beer Festival" (see below)
2nd: Phillipa Ford, "Brownie Royal Wedding Party"
3rd: Mike Wallace, "Evening Visit behind Castle Road"
Commended: Richard Ford, "Revel Day"

Children 12 to 17

1st: Eleanor Gardner, "Vibrant Spices"
2nd: Samuel Potter, "Sunset"
Highly Commended: Eleanor Gardner, "A British Day at the Seaside"

Children 11 and Under

1st: Alex Ford, "Self Portrait with Waterproof Camera"
2nd: Ellie Shaw, "Brownies"
3rd: Harry Barclay, "Sunshine Plane"
Commended: Hannah Gardner, untitled
Commended: Bradley Hathaway, "St. Thomas a Becket"

Best-of-the-Rest

Open Category: Shaun Hopkins, "Thai Fisherman"
Village Life Category: Shaun Hopkins, "Starlings in the Snow"



First place in the adults Village Life category was Richard Ford's 'Serving at the Beer Festival'

Bored? Lonely? Not In Pucklechurch

Many people in rural communities say there's not much to do where they live. They mustn't live in Pucklechurch! The range of things to do here is simply amazing. There's no excuse to be bored. If you're lonely, join a group and meet some new friends. There's something for everybody!

Move Your Body

If you need more exercise, you can stretch your mind and body with yoga (Tuesdays, 8-9pm or 9-10pm, in the Community Centre meeting room, £7), heed the callers with the Folk Dance Club (alternate Tuesdays, 7.45-10.15pm, Community Centre, £2), or shake your bumba at Zumba, a Latin-inspired dance fitness class (Wednesdays, 6-7pm, Community Centre, £4).

Children may be interested in joining Pucklechurch Majorettes (Thursdays, 4.15-5pm for kids 6 and under and 5-6.30pm for those 7 and over – contact Kelly Powell on 07855 500698 for more information).

If you're the sporty type, there are Pucklechurch football and cricket teams for both youngsters and adults. For Pucklechurch Sports FC adult teams, ring 07767 655861 for more information, and to contact the Pucklechurch Sports Youth FC, email timpsyfc@live.co.uk. If cricket's your thing, call Pucklechurch Cricket Club Secretary Vicky Freestone on 937 3227 to find out more about the adult and youth teams. There's also the Pucklechurch Ladies' Hockey Team, which plays in Winterborne on Saturdays. Email ladieshockey@pucklechurch.org to find out more.

Are you more of an indoor type? Why not try badminton (Sundays, 7-10.30pm, in the Community Centre) or short-mat bowls (Sundays 2.30-5pm, Mondays and Wednesdays 7.30-10pm, in the Community Centre). Both village clubs – the Pucklechurch Village Sports & Social Club on St Aldam's Drive and the Pucklechurch Sports and Social Club in the Community Centre – have skittles alleys and host a number of skittles teams. Teams are always looking for new members, so enquire at the clubs to find out more.

Groups for Children and Young People

Pucklechurch boasts a full complement of Scouting and Girlguiding units. Our local Scouting Group consists of three sections, a Beaver Colony (ages 6-8), a Cub Pack (ages 8-10½) and a Scout Troop (ages 10½-14). An Explorer Scout Troop (ages 14-18), administered by the Scout District, also meets at the Scout Hut. All sections are open to both girls and boys. For more information on how to join, email scouts@pucklechurch.org.

Girlguiding is very popular too. Pucklechurch has Rainbow units (ages 5-7), Brownie units (ages 7-10), a Guides unit (ages 10-14), and a Senior Section (ages 14-25). Guiding teaches girls life skills in an environment without boys. To find out more, ring Ros Abbott on 937 2157.

The Youth Club in Pucklechurch meets every Thursday evening from 5.30-7pm in the Community Centre meeting room. Come along and join in the activities... or just to chill. If you have young children, you should already know that there are two playgroups and a Sure Start group. Tower Playgroup, which meets in the church, can be contacted on 07722 029077. Pucklechurch Playgroup meets in the Community Centre. Ring 07736 713730 or visit the website on www.pucklechurchplaygroup.co.uk for details. South Gloucestershire operates a Sure Start Stay-and-Play session on Thursdays from 1-3pm in the Community Centre for all children up to 5 years old and their parents. The sessions offer information, advice and guidance, plus a safe place to play. Find out more on 01454 864144 or email us at KingswoodChildrenCentre@southglos.gov.uk.

Groups for Adults

Happy Circle provides activities and outings for the older residents of Pucklechurch. Meetings are held Tuesdays at 2pm in the Homefield Centre (behind 32-36 Shortwood Road). During the summer months, outings are arranged to places of interest. Ring Liz Archibald on 937 4054 for details.

The Pucklechurch Gardeners' Club meets the first Wednesday of each month in the Community Centre hall from 7.45pm. Each meeting features both a speaker and some time to chat. Visitors are always welcome.

There are two local Women's Institutes. The Pucklechurch WI meets on the third Wednesday of each month at 7.30pm at the Homefield Centre. Contact Pauline Always on 937 3141 for details. The Shortwood Village WI meets on the second Thursday of every month in Shortwood chapel. For more information, ring Catherine Stapleton on 937 3312.

VOTO (Villagers on Their Own) is a group is for villagers over 50 who are on their own. We meet monthly for a meal out, bowling, or a visit to the theatre. Contact Elaine on 937 3105 or elainerudge@aol.com for details.

Cultural Activities

More of a culture vulture, are you? There are several groups and events that might interest you.

There's the Pucklechurch Twinning Association, a sociable, family-oriented group that organises exchange trips to and from our twin village of Pringy in France. Develop friendships with people both in the village and abroad. Ring Ann Smith on 937 2030 for more information.

If you ever fancied treading the boards or working behind the scenes to put on a play, Pucklechurch Players are always looking for new talent and extra hands. The Players typically stage two productions a year. To find out more, check out their website at www.pucklechurchplayers.wetpaint.com or email them at Pucklechurch_Players@live.co.uk.

Did you know there's an open mic night on the last Friday of each month starting at 8.30pm at the Social Club on St Aldam's Drive? If you sing or play an instrument – or just want to listen – you're welcome to come along. Perform on your own, join up with someone else, or participate in a jam session with other musicians. All types of music welcome.

If that doesn't ring your chimes, perhaps Hand Bell Ringers is more your tune. New members are always welcome, tuition will be provided, and there's no need to read music. Practices are on Tuesdays from 7pm. Contact Marion Thorne for more details.

Volunteer Opportunities

If you would like to offer your services to a local group, there are several to choose from in Pucklechurch. The big one for the village is, of course, the Revel Committee, who organise our summer fête, as well as other events throughout the year. This group not only raises money to pay for these events but also provides funds for many local organisations, such as our Scouting and Guiding units, playgroups, Happy Circle, the PCA and others. This group requires lots of volunteers for its events, so you don't need to be on the committee to help. Contact Elaine Stone on 937 3105 or elainerudge@aol.com if you can lend a hand.

The Pucklechurch Community Association also needs volunteers to help run the Community Centre at the heart of our village. If your skills are more appropriate for facilities management, perhaps you'd like to join this group. Contact Alan Holder on 937 2818 or alan.holder@hotmail.co.uk.

Are your skills more practical? The Good Neighbour Scheme could use your talents. They provide assistance with garden tasks, minor household repairs, or other chores for local people who need help. Contact the team on 07961 939574 or goodneighbours@pucklechurch.org.

We also have a local branch of the National Society for the Prevention of Cruelty to Children, who are always looking for more helpers. This committee raises funds to support the NSPCC. Contact Juliet Hills on 937 2279 or juliet.hills@sky.com to find out more.

Oaktree Green Public Enquiry

A proposal to build houses and a new doctor's surgery on the open space in Oaktree Avenue has been on the table for some time. Many villagers feel strongly that the land plays a vital role in providing residents with a communal space on which to walk, run, exercise and play. Over the years, several campaigns have been instigated to prevent this land being developed, with varying degrees of success. Just recently the area that was used for securing the barrage balloons during WWII was designated a site of historic interest by English Heritage. Other campaigns have not been so successful. With South Gloucestershire Council (SGC) having agreed to give the land to Sovereign Housing Association in 2001, the proposed development has seemed destined to go ahead for some time.

Pauline Bradley and her husband Jim head up the current campaign to prevent the space being built on. An application has been put forward to SGC to designate the space as a village green, which would protect it from development. This application has caused SGC to postpone the building plans, pending its result. Pucklechurch Parish Council supports the application for village green status. Significantly, the village green application does not include the land on which the new doctor's surgery is to be built. A recent *Evening Post* article stated that SGC were using the surgery as a bargaining chip with which to lay claim to the whole area. Pauline and Jim deliberately left the area on which the surgery is to be built out of the space proposed as a village green. "We can't do without a doctor's surgery in the village and there's nowhere else for it," said Pauline.

A three-day public enquiry was held in September by SGC's Commons and Rights of Way department to enable residents to put forward their case for designating the open space on Oaktree Avenue as a village green. The enquiry was held at Shortwood Lodge Golf Club and attended by various SGC representatives from the Commons and Rights of Way department and the legal department. Unusually, a barrister represented the SGC legal department. An inspector, who was also a barrister, oversaw the proceedings, acting as an independent adjudicator.

To present the best possible case, Pauline and Jim spent many hours gathering information about the site, as well as evidence from many villagers that the land is used by a host of people for a variety of activities. This was then presented to the enquiry with some of the witnesses attending to substantiate their statements in person of how they have used the area over the years. The village green application was submitted with 169 different witness statements.

Witnesses who spoke at the enquiry were questioned first by SGC representatives and then by Jim or Pauline Bradley on how they use the area, what activities they use it for, and how often they use it. The area was divided into separate parts and witnesses were asked which areas they used most often and for what activities.

Having never attended a public enquiry before, I found the proceedings rather rigid and sombre. The barrister hired by SGC questioned witnesses with the aggressive manner of a criminal trial. I felt that this inhibited residents from fully expressing their views. That the questioning relied so much on legal and historical technicalities made me appreciate the amount of work and the depth of research that Jim and Pauline had done.

The inspector stated at the enquiry that, pending the outcome of two other related cases, the earliest any result could be expected is January 2012.

Helen Sharne

Under New Management

Two local establishments have recently had management changes: The Coach House and the Rose and Crown.

Kathryn Demiceli, a long-time Pucklechurch resident, reopened the Coach House café on Westerleigh Road in July. She and her son Sam, who grew up in the village, provide breakfast, lunch and afternoon tea in the pleasant surroundings of this lovely, old building. There are fresh flowers on the table and a menu of home-made dishes. Their speciality is afternoon tea, where Kathryn gets out the best china and offers a selection of her home-made cakes.

"I always wanted to run the Coach House," says Kathryn, "when it came up for lease, I jumped at the chance." She has decorated the place with bunting and country patterns, improved the garden seating area, and added a table out front. Pop in for coffee or a meal, or splurge on an afternoon tea. We wish the new Coach House all the best in the months to come.

After 15 years of managers, the Rose and Crown on Parkfield Road is in the hands of a tenant again. Adam Murrin and Suzanne Josham have taken on the pub as their own business, and thus have a big stake in its success.

Adam considers the Rose and Crown a "destination pub", one that people come to from all round the area. Having a tenancy allowed Adam and Suzanne to drop the drink prices, so that should make it popular with us locals as well. They still offer Wadsworth real ales and a good selection of wines. "Good customer service is our goal," says Adam. He showed me his "Nobody's Perfect" cards, which they'll use to get feedback on what customers want. "We don't want to change too many things at once, though. We'll try a few things and adjust over time. We're still getting a feel for the place."

Suzanne heads up the kitchen, which serves pub classics as well as daily specials. "I'm a cook, not a chef!" she says. "We serve generous portions of freshly cooked food – the kind many people don't have time to cook any more." She promises you'll get no boil-in-bag meals at the Rose and Crown. They're booking for their six-course Christmas meal and are planning a traditional New Year's Eve with no entry charge. Let's hope Adam and Suzanne are around for many more!

Jacki Berry

Local History: The White Hart Inn

As webmaster for the community website I sometimes get enquiries about the village or people. Recently it was an question about the White Hart Inn. I was surprised that I couldn't find much about it.

SGC publish a leaflet called the *Pucklechurch Village Trail*, which has the following comment: "The large stone house in the centre of the village (now 1 Abson Road) used to be the White Hart Inn, where, if a visitor wanted a bed for the night, tradition said that they had to be accommodated no matter how full the hostelry was at the time."

Gloucestershire Records Office has documents showing that in 1794 a friendly society called *Loyal Union Society* met at the White Hart, Pucklechurch. There are a number of other small references to the White Hart but nothing substantial.

Do you know anything about this old inn? Do you have any memories of it or do you know someone who might? Maybe you have something tucked away in a drawer that would shed some light on the place. Surely there must be stories about a place with the reputation of accommodating all travellers no matter how full they were.

Don't let a piece of our history fade away. If you are willing to share memories, documents, or tales you have heard, please contact Martin Smith on 937 4437 or webmaster@pucklechurch.org



Since January 2011, Holly, Elsiemae, Briony, Eleanor, and I have been working towards gaining our Baden-Powell Challenge award.

Part of earning the badge was that each of us girls had to complete ten challenges, such as starting a new hobby, finding out about a child from a developing country, or sleeping in a makeshift tent. We found this great fun and especially enjoyed it when we could do the challenges together!

To finish the badge, we needed to go on a trip. We chose to go for a weekend away and stay in the Guiding house in London, which we did in September. However, this cost quite a bit of money, and so we set to work fundraising. We did things such as car washing, gardening, washing up, cleaning out a garage, and lots of other things. We also received generous donations from the Parish Council and YOI Ashfield.

Our trip was fantastic! We travelled down on the National Express coach by ourselves, and when we got to the Guiding centre, we got into groups and planned for the challenge the next day.

Our challenge was called the monopoly challenge, meaning we had to go to all the places on the monopoly board, gaining points for each place we visited. We each got a one-day travel card to help us in our challenge.

We had lots of funny moments, made lots of new friends, and had an overall amazing time. We would definitely recommend this to others!

Alice Hay



The girls leave Bristol for their London adventure

Health and Wellbeing at Your Fingertips!

Well Aware is a free, online information resource for everyone in Bristol, South Gloucestershire, and Bath & North East Somerset. Well Aware has lots of information on 1,000s of health, wellbeing and community groups, organisations, activities and services. Whether personal health services, a lunch club or social group, help round the home or the garden, transport, advice, counselling or any other form of support -- you'll find it's just a few clicks away.

The user-friendly website can also be searched for services for carers, support for particular disabilities, culturally specific services and more. A dedicated section helps find information on employment for anyone with mental ill health. There's also a resource especially for people with learning difficulties.

Well Aware is completely free to search, use, or be listed on. Its searches provide results by relevancy only, with no advertising. Start using it today!

www.wellaware.org.uk

If you do not have access to a computer yourself, you can ask the Well Aware team at The Care Forum instead by calling Freephone 0808 808 5252 (9.30-4.30, Mondays to Fridays). There is an answering machine to leave a message if the Well Aware team is not available.

Revel AGM

Pucklechurch



The Pucklechurch Revel AGM was held on Wednesday, 28th September. Elaine Stone who chaired the meeting thanked everyone for all their hard work and commitment. She also thanked the Parish Council and SEGRO, who were the main sponsors of Revel, and all local businesses and shops for their continued support. She went on to ask those assembled where they felt Revel should go next and people were given the opportunity to make comments.

Treasurer Derek Watts said £4,000 was available to distribute among the groups in the village. (See list right.)

The Bob Stone Memorial Award, which is awarded annually to the person or organisation that has made a significant contribution to Revel, was presented to Dave Sergent. This was the village saying thank you for Dave's contribution to Revel over the years. Dave has never been a member of the committee but is always there to put the bunting up, take it down, and help in any way he can.

The officers elected for the Revel 2012 Committee are:

Chairman: Elaine Stone and Mike Rawlings, joint chairs

Treasurer: Derek Watts

Secretary: Angela Hallett

Minutes: Chris Murphy

If anyone else would like to join the committee or be a volunteer, please contact Elaine on 937 3105 or email on elainerudge@aol.com

The next Revel event will be the lighting of the Christmas tree on Sunday, 27th November. Come and enjoy a glass of mulled wine and a mince pie and meet Father Christmas. Look out for posters for more details.

Elaine Stone, Revel Co-Chair

Revel 2011 Funds Distribution

Organisation	Total
1st Rainbows	£75
3rd Rainbows	£75
1st Brownies	£150
1st Pucklechurch Guides	£150
Dyrham District Guides	£50
Scouts (Cubs)	£300
Scouts (Tohill Explorers)	£50
Pucklechurch Playgroup	£325
Tower Playgroup	£325
Majorettes	£300
Pucklechurch Youth Club	£50
Happy Circle	£100
St Thomas a Beckett	£200
Community Association	£250
Pucklechurch School Association	£400
Pucklechurch HeartStart	£600
Pucklechurch Cricket Club	£600
Total	£4,000